

NH1XLgPV 1500V DC 63A-200A Photovoltaic Fuse 光伏熔断器



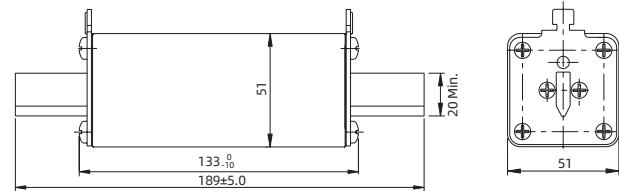
Standard/ 标准: IEC 60269-6, GB/T 13539.6

INTERRUPTING CAPACITY/ 分断能力:
30,000 A at 1500V DC (Time Constant:1-3ms)

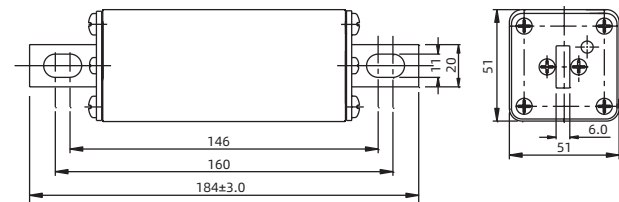
Dimensions/ 尺寸:

Unit 单位: mm

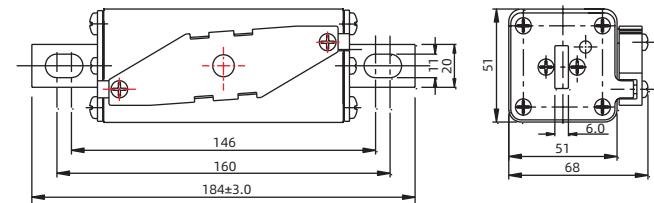
Type:NH1XLgPV Part No.: 1XLgPV(amp rating)U15A/A2



Type:NH1XLgPV-B Part No.: 1XLgPV(amp rating)U15B



Type:NH1XLgPV-B Part No.: 1XLgPV(amp rating)U15BC



TECHNICAL PARAMETERS/ 技术参数:

PART NO. 目录编号	CURRENT RATING 额定电流	SAFETY APPROVALS 安全认证
		TUV
1XLgPV63U15A/A2	63A	●
1XLgPV63U15B/BC		●
1XLgPV80U15A/A2	80A	●
1XLgPV80U15B/BC		●
1XLgPV100U15A/A2	100A	●
1XLgPV100U15B/BC		●
1XLgPV125U15A/A2	125A	●
1XLgPV125U15B/BC		●
1XLgPV160U15A/A2	160A	●
1XLgPV160U15B/BC		●
1XLgPV200U15A/A2	200A	●
1XLgPV200U15B/BC		●

A- 触刀安装带中央指示器 blade contacts with the center indicator
A2- 触刀安装带中央指示器和顶部指示器 blade contacts with the central indicator and the top of the indicator

B- 螺栓连接 bolted connections
BC- 螺栓连接带微动开关底座 bolted connections with microswitch base

A、A2-optional 可选择

B、BC-optional 可选择

U15 DENOTES FOR 1500V DC

U15 表示 1500V DC

● DENOTES FOR APPROVAL

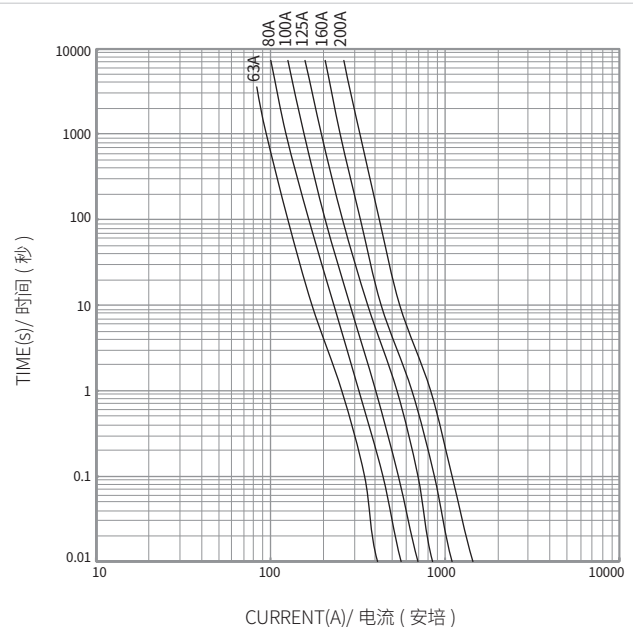
● 表示已取得安全认证

○ DENOTES FOR PENDING

○ 表示正在申请安全认证

NH1XLgPV 1500V 平均 I-T 曲线图 (仅供参考)

AVERAGE I-T CHARACTERISTICS CURVE
(FOR REFERENCE ONLY)



CURRENT(A)/ 电流 (安培)

PART NO. 目录编号	Optional Accessory 可选配件	
	Fuse Holders 熔断器座	Microswitches 微动开关
1XLgPVXXXU15A	NH1XLBU15	/
1XLgPVXXXU15A2	NH1XLBU15	HMT-01
1XLgPVXXXU15BC	/	HMC-01